

# Hotels



**EMBASSY  
SUITES**  
by HILTON™

## Embassy Suites Brea - North Orange County



# Hotels



**EMBASSY  
SUITES**  
by HILTON™

## **Embassy Suites by Hilton Brea - North Orange County**

900 East Birch Street,  
Brea, California 92821

Phone: (714)-990-6000

Embassy Suites by Hilton Brea Hotel is the ultimate basis for any getaway, regardless of the occasion. Thanks to our superb location and broad range of amenities, your time with us is guaranteed to be hassle-free. Our hotel near Disneyland boasts family-friendly accommodations; high-chairs and cribs are available upon request. If you are in the area for business, a special occasion, or just to relax, you will feel right at home in a spacious two-room suite.

### **Hotel Information**

Check-in: 4:00 pm

Check-out: 11:00 am

Smoking: Non-Smoking

Parking: Self parking: (Parking Lot)

Valet: Not Available

Pets:

Service animals allowed: Yes

Pets allowed: No

### **Directions**

From John Wayne Airport/Orange County

FWY 55 NORTH TO I-5 NORTH TO FWY 57 NORTH- EXIT IMPERIAL HWY -  
LEFT, STATE COLLEGE BLVD - RIGHT, BIRCH STREET - LEFT, HOTEL ON LEFT

From Ontario International Airport

I-10 WEST TO FWY 57 SOUTH EXIT LAMBERT ROAD - RIGHT, STATE COLLEGE  
BLVD - LEFT, BIRCH STREET -RIGHT, HOTEL ON LEFT

From Los Angeles International Airport

FWY 105 EAST TO FWY 605 SOUTH TO FWY 91 EAST TO FWY 57 NORTH EXIT  
IMPERIAL HWY - LEFT, STATE COLLEGE BLVD - RIGHT, BIRCH STREET - LEFT

### **Room Amenities**

For Comfort:

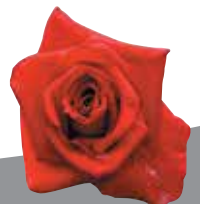
- Air Conditioning
- Balcony
- Black-Out Curtains
- Curved Shower Rod
- Embassy Suites Eat Right Menu
- Ergonomic Desk Chair
- Feather Pillows Non Allergenic
- Flexible Work Environment
- HD Channels
- In-Room Movie Channel
- Lever Door Handles
- Non-Smoking
- Seating Area with Sofa
- Seating Area with Sofa Sleeper
- Serta Suite Dreams(R) Bedding
- Sofa Bed
- TV - 42 Inch Flat Panel HD
- TV-Cable
- TV-Pay per view
- TV-Premium HBO,CNN,ESPN
- TV-Standard Network

For Confidence:

- Alarms - Audible
- Alarms - Visual Strobe
- Controlled Access Corridors
- Double Locking Doors
- Electronic Locks
- Electronic Smoke Detector
- Safe
- Visual Strobe/Hearing Impaired

For Convenience:

- Bathroom Amenities
- Complimentary Hot Breakfast
- Convenient Electrical Outlets
- Desk Level Electric Plugs



# Hotels



**EMBASSY  
SUITES**  
by HILTON™

- Digital Key Available
- Electronic Newspapers
- Evening Manager's Reception
- Hairdryer
- High Speed Internet Access
- Iron
- Iron/Ironing Board
- Microwave
- Mini Refrigerator
- Neutrogena(R) Bath Amenities
- Newspaper M-F (USA Today)
- Remote-Controlled Television
- Self Laundry Available
- Telephone - Auto Wakeup
- Telephone - Two Phones
- Telephone - Voice Mail

## **Guests Enjoy**

- Free Cooked-to-Order Breakfast Daily
- Evening Reception with Complimentary Cocktails
- Local Area Transportation
- 

## **Business Services**

- 24/7 Business Center
- Complimentary Printing Service
- Meeting Rooms
- Audio/ Visual Equipment Rental
- Fax & Copying (\$0.05)

## **Fitness and Recreation**

- 24/7 Fitness Center
- Outdoor Heated Pool
- Whirlpool

## **Additional Hotel Perks**

- ATM
- Room Service

- On-Site Convenience Store
- Concierge Desk
- Luggage Hold
- Coin Laundry

## **Accessible Features**

Embassy Suites by Hilton Brea North Orange County Hotel complies with ADA Guidelines and the Americans with Disabilities Act of 1990. Our property offers accessible rooms, parking, and public areas and facilities.

## **Embassy Exclusives**

### Complimentary Breakfast

Start your day out right with free, cooked-to-order breakfast! Each morning of your stay, enjoy a wide selection of hot and cold items including breakfast potatoes, fruit, eggs, oatmeal, bacon, and pastries, or opt for a cooked-to-order omelet (filled with your favorite ingredients). Whether you are looking to sit down and join us in the atrium or are eating on the run, there are plenty of options to choose from.

### *Hours*

*Monday - Friday: 6:00AM - 9:00AM*

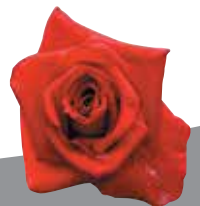
*Weekends & Holidays: 7:00AM - 10:30AM*

### Evening Reception

Guests are invited to take part in our nightly Evening Reception, the perfect place to prep for a night on the town or to kick-back and relax after a long day of exploring Orange County. The Evening Reception features light snacks and an assortment of alcoholic and non-alcoholic beverages, free for our guests! People of all ages are welcome to join us; service of alcohol is limited to those of legal drinking age.

### *Hours*

*Sunday - Saturday: 5:30PM - 7:30PM*

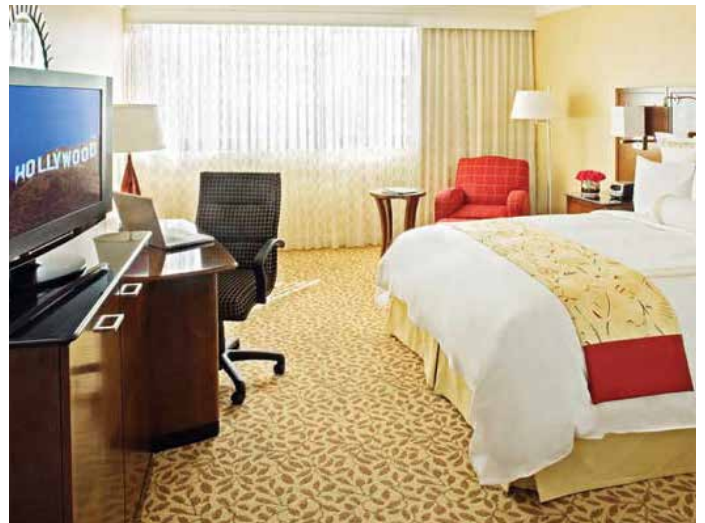




# Hotels



## Los Angeles Marriott Burbank Airport



# Hotels

## Los Angeles Marriott Burbank Airport Fact Sheet



### Los Angeles Marriott Burbank Airport 2500 Hollywood Way

Burbank, California 91505 USA  
Phone: 1-818-843-6000  
Fax: 1-818-842-9720  
Sales Fax: 1-818-563-9182

Marriott Rewards category: 4  
This hotel has a smoke-free policy

#### Hotel Awards

- AAA Diamonds: 3

#### Directions

##### From Airport

##### Burbank-Glendale-Pasadena (BUR) - BUR

- 1-818-840-8830
- Hotel direction: 0.1 miles E
- Driving directions: Exit airport on Thornton Ave. Turn right at the light and make an immediate left into hotel entrance.
- Courtesy phone available

##### Los Angeles (LAX) - LAX

- 1-310-646-5252
- Hotel direction: 28.3 miles SW
- Driving directions: 1. Head east from World Way/Center Way - go 29 ft 2. Turn left onto the CA-1 N ramp - go 482 ft 3. Bear right onto the CA-1 N ramp - go 0.2 mi 4. Bear right at S Sepulveda Blvd - go 2.0 mi 5. Bear right and head toward Howard Hughes Pky - go 0.1 mi 6. Continue on Howard Hughes Pky - go 0.3 mi 7. Take the I-405 N ramp - go 14.2 mi ... 8. Take the US-101 N/US-101 S

ramp to Ventura/Los Angeles - go 0.5 mi 9. Take the US-101 S ramp to Los Angeles - go 5.1 mi 10. Continue on CA-134 E toward Burbank/Glendale - go 1.9 mi 11. Take the Pass Ave exit to Burbank - go 0.2 mi 12. Turn right at N Pass Ave - go 335 ft 13. Turn left at W Alameda Ave - go 0.3 mi 0.3 mi 14. Turn left at N Hollywood Way - go 2.9 mi 15. Arrive at 2500 N Hollywood Way Burbank, CA 91505

- Alternate transportation: Super Shuttle; fee: 26 USD (one way) ;on request
- Estimated taxi fare: 80.00 USD (one way)

#### Arrival Information

##### Check-In and Checkout

- Check-In Kiosk
- Check-in: 3:00 PM, Check-out: 12:00 PM
- Video Review Billing, Video Checkout
- Express Check-In and Express Checkout

#### Parking

- On-site parking, fee: 4 USD hourly, 14 USD daily

#### Pet Policy

- Pets allowed , Non-refundable sanitation fee: 75 USD ; contact hotel for details

#### Hotel Details

- 8 floors , 395 rooms , 93 suites
- 22 meeting rooms, 46,000 sq ft of total meeting space
- 8 concierge levels
- Reimagined Lobby

#### Guest Room Information

(may vary by room type)

##### General Room Amenities

- Air conditioning
- Alarm clock
- Bottled water, for a fee
- Coffee maker/tea service
- Crib
- Individual climate control
- Iron and ironing board
- Pillows: down/leather
- Pillows: foam
- Pull-out sofa bed
- Rollaway bed

##### Bathroom Amenities

- Bathrobe
- Hair dryer

##### Room Entertainment

- Cable channel: CNN

- Cable channel: ESPN
- Cable channel: HBO
- Cable/satellite TV
- Color TV
- Movies/videos, pay-per-view
- Plug In Panel

##### Business Amenities

- Electrical outlet: dual-voltage
- Phone feature: speakerphone
- Phone feature: voice mail
- Two-line phone

##### Services

##### Complimentary Service

- Coffee/tea in-room
- Phone calls: toll-free

##### Guest Services

- Concierge desk
- Safe deposit boxes, front desk

#### Restaurants & Lounges

##### Daily Grill

- American
- Open for breakfast, lunch and dinner
- The Daily Grill - part of the popular chain of restaurants - is known for serving hearty portions of classic American food. Join us for breakfast, lunch, or dinner. Our intimate booths and friendly staff are reminiscent of classic American grills.

#### Recreation

##### Swimming

- Santa Monica (24.6 mi)
- East Tower Pool
- West Tower Pool
- Whirlpool

##### Activities

- Bowling (5 miles)
- Hiking
- Horseback riding (5.9 miles)
- Miniature golf (8 miles)
- Mountain biking, trail (9 miles)
- Nature preserve, trail
- Tennis (2 miles)
- Volleyball

##### Fitness Facilities

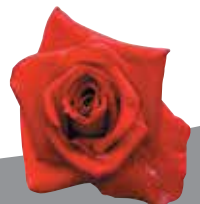
- Fitness Center

##### Golf

- DeBell Golf Course(3.7 miles)
- Griffith Park Golf Course(9 miles)

##### Spa

- Relax Spa & Beauty
- Appointment required



# Hotels

## Los Angeles Marriott Burbank Airport Fact Sheet

### **Attractions & Landmarks**

- Universal Studios Theme Park & Citywalk
- NBC Studios - Home of the Jay Leno Show
- Warner Bros. Studios
- Hollywood Walk of Fame / Hollywood & Highland Center
- Autry Museum of Western Heritage
- Six Flags Magic Mountain
- Disneyland
- Knotts Berry Farm
- The Los Angeles Zoo and Botanical Gardens
- LA Equestrian Center
- Downtown Los Angeles
- Griffith Park Observatory
- Dodger Stadium
- Staples Center
- LA Live
- Burbank Town Center
- Hollywood Park Horseracing Club

### **High-speed Internet access**

#### **Locations | Connectivity**

- Public Areas
  - Wireless
- Guest Rooms
  - Wired





# Hotels



## Long Beach Marriott



# Hotels

## Hotel Details

### Long Beach Marriott

4700 Airport Plaza Drive  
Long Beach, California 90815 USA

Phone: +15624255210  
Fax: +15624252744  
Toll-free: 1-800-228-9290  
Sales: +15626278040  
Sales Fax: +15624211075

## Arrival Information

### Check-in and Check-out

- Check-in: 3:00 PM
- Check-out: 12:00 PM
- Express Check-In and Express Checkout
- Video Review Billing, Video Checkout

### Internet Access

- Guest rooms Wireless, Wired
  - **High Speed:** Check email + browse the Web for 9.99 USD/day
  - **Enhanced High Speed:** Video chat, download large files + stream video for 14.99 USD/day
- Lobby and public areas: Complimentary Wireless
- Meeting rooms: Wireless, Wired

### Parking

- Complimentary on-site parking
- Ample Self Parking at the Front & Back of the Hotel

### Property Details

- 8 floors, 307 rooms, 2 suites
- 15 meeting rooms, 17,063 sq ft of total meeting space
- 1 concierge level
- New Lobby

### Smoke-free Policy

- This hotel has a smoke-free policy

### Pet Policy

- Pets not allowed

## Services & Amenities

- All public areas non-smoking
- Beauty shop, nearby (referral at front desk)
- Buffet breakfast, fee from: 16.95 USD
- Cash machine/ATM
- Coffee/tea in-room
- Concierge Lounge Hours
- Concierge desk
- Continental breakfast, fee from: 12.49 USD
- Evening turndown service
- Foreign exchange, nearby
- Full American breakfast, fee from: 13.95 USD
- Gift/newsstand
- Grab-n-Go breakfast, fee from: 9.25 USD
- Health & Beauty Services
- Hot breakfast, fee from: 16.95 USD
- Housekeeping service daily
- Mobility accessible rooms
- Newspaper delivered to room, on request
- Newspaper in lobby
- Phone calls: toll-free
- Room service, 5:30 AM-12:00 AM
- Safe deposit boxes, front desk
- Valet dry-cleaning
- Vending machines

## Guest Room Information

### General Room Amenities

- Air conditioning
- Alarm clock
- Bottled water, for a fee
- Coffee maker/tea service
- Crib/Play Yard
- Electrical adapters
- Individual climate control
- Iron and ironing board
- Luxurious bedding - down comforters, custom duvets, cotton-rich linens
- Mini fridge
- Pillows: down/feather
- Pillows: foam
- Rollaway bed
- Safe

### Bathroom Amenities

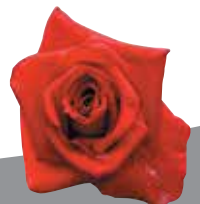
- Bathrobe
- Hair dryer

### Room Entertainment

- Cable channel: CNN
- Cable channel: ESPN
- Cable channel: HBO
- Cable/satellite TV
- Color TV
- Movies/videos, pay-per-view
- Plug In Panel

### Business Amenities

- Electrical outlet: desk level
- Phone feature: voice mail





# Hotels

## Dining

### The Terrace Grille & Patio

- International
- Open for breakfast, lunch and dinner
- Palate satisfying menu offering breakfast, lunch and dinner with California, Latin & Asian Cuisines. Sunday Champagne Brunch offered each week at \$25.95 per person

### Tamarindo's Margarita Bar & Cantina

- Tex-Mex
- Open for dinner
- Great appetizers & salads created in our open kitchen by our Chef. Amazing margaritas & cocktails, specialty draft & bottle beers.

### Starbucks® & Vista Bar

- Coffee House
- Open for breakfast, lunch and dinner
- For the traveler on the run, Starbucks has your hot latte and a small bite for the road.

## Fitness & Recreation

### Fitness

- Long Beach Marriott Fitness Center

### Swimming

- Long Beach 0 miles
- Indoor pool
- Outdoor pool

### Golf

- Skylinks Golf Course 0.1 miles
- El Dorado Golf Club 4 miles
- Lakewood Country Club 3 miles
- Recreation Park Golf Course 18.3 miles
- Heartwell Park Golf Course 4 miles

### Activities

- Bike rentals 7 miles
- Biking trail 3 miles
- Boating 7 miles
- Bowling 7 miles
- Horseback riding 13 miles
- Jet-skiing 6 miles
- Jogging/fitness trail 3 miles
- Kayaking 5 miles
- Sailing 6 miles
- Sauna 1 miles
- Scuba diving 7 miles
- Solarium
- Squash 4 miles
- Surfing 10 miles
- Volleyball 2 miles
- Water skiing 6 miles
- Snow skiing Mountain High Ski Resort
- Tennis 4 miles

## Local Attractions

- Long Beach Convention Center
- Aquarium of the Pacific
- StubHub Soccer & Tennis Center
- Queen Mary/Shoreline Village
- Pacific Beaches

- Catalina Island Adventure Tour
- Los Alamitos Race Track
- Knotts Berry Farm
- Disneyland/California Adventure
- Universal Studios Tour

## Driving Directions from Airport

### Long Beach Airport – LGB

Hotel direction: 0.5 miles SE

**Driving directions** Turn right onto Lakewood Boulevard and follow the boulevard to Spring Street. Turn left onto Spring Street then right onto Airport Plaza Drive.

- Airport shuttle service, on request, complimentary
- Shuttle Phone +15624255210(Ext0)
- Courtesy phone available
- Estimated taxi fare: 5 USD (one way)

### Los Angeles International Airport – LAX

Phone: +13106465252  
Hotel direction: 22 miles SE

**Driving directions** Travel south on the San Diego Freeway (Interstate 405) and exit at Lakewood Boulevard North. Turn right and follow the boulevard to Spring Street. Turn right onto Spring Street then right again onto Airport Plaza Drive.

**This hotel does not provide shuttle service.**

- Alternate transportation: SuperShuttle; fee: 17 USD (one way) ,reservation required
- Estimated taxi fare: 50 USD (one way)

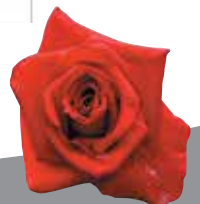
### John Wayne Airport-Orange County – SNA

Phone: +19492525006  
Hotel direction: 22 miles NW

**Driving directions** Travel north on the San Diego Freeway (Interstate 405) and exit at Lakewood Boulevard North. Turn right onto Spring Street then right again onto Airport Plaza Drive.

**This hotel does not provide shuttle service.**

- Alternate transportation: SuperShuttle; fee: 37 USD (one way) ,reservation required
- Estimated taxi fare: 40 USD (one way)



# Hotels

## Accessibility

For more information call the general manager of the hotel

- Accessible guest rooms have a 32 inch wide opening
- Fitness center entrance is accessible
- Main entrance is accessible
- Pathway to registration desk is accessible
- Registration desk is not accessible
- Route to accessible guest rooms is accessible
- Service animals allowed for persons with disabilities
- Business center entrance is accessible
- Hotel has on site accessible self-parking
- Meeting spaces are all accessible
- Pool entrances are all accessible
- Restaurants and lounges are all accessible
- Self-operating lifts or sloped entry are available for all pools

